



Limerick 2030 Update

June 2015

Conn Murray
Chief Executive, Limerick City & County Council



Presentation Outline

- Putting people first
- Vision
- Strategy
- Limerick 2030 Strategic Framework
- Limerick 2030 Outcomes



Putting People First

Local Government is being empowered to lead economic, social and community development locally.

Local Government will be the main vehicle of governance and public service at local level, deliver efficient and good value services, and represent citizens and communities, as effectively and accountably as possible.

Separate structures of public service will not therefore be established outside of local government unless clearly necessitated in exceptional circumstances.



Vision

That the people of Limerick are supported by a professional, proactive and accessible local government structure at the heart of a wider public service

Acknowledged for its inclusive participation of all its citizens in the development of their community

That Limerick is the desired location for business development, cultural enrichment and educational opportunity

That Limerick and the mid west will compete with other European destinations in terms of business, tourism, living and investment

OUR STRATEGY

We will:

- Empower the people of Limerick to participate in the development of their community, both rural and urban.
- Create a pro-business environment for sustainable economic development and job creation.
- Create a new model of local governance and service delivery based on excellence in council leadership.

We aim to:

- Build a City and County Council that is recognised as ambitious for the people of Limerick.
- Grow our economy and create opportunity in Limerick.
- Invest in Limerick's infrastructure, protect its natural and built environment and unique heritage mix.
- Promote a socially integrated, healthy & safe Limerick.
- Actively engage with our communities.
- Work with our colleagues across the public sector and our partners in the private sector to deliver on a shared commitment to Limerick as set out in The Limerick Charter.
- Be efficient, effective and committed to providing services that will underpin an innovative Limerick.

The Approach





Limerick 2030 Action Plan for 2015



Limerick 2030 Strategic Framework

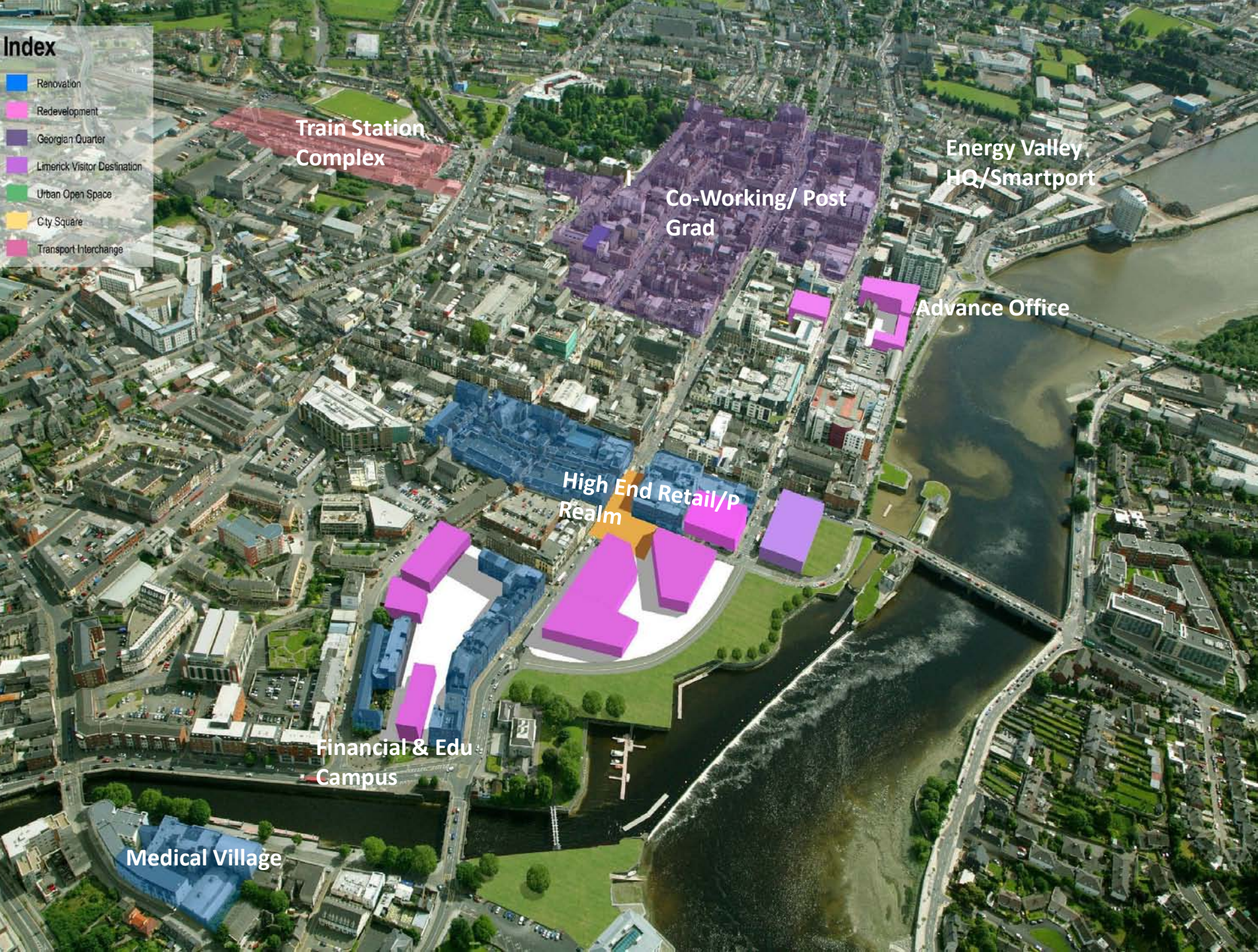


Limerick Economic Forum - Membership

Denis Brosnan	Chairman
Loretta Brennan Glucksman	Fmr. Chairman American Ireland Fund
John Moran	Chairman of Hunt Museum
Michael Collins	Chairman Shannon-Foynes Port Co.
Rose Hynes	Chairman Shannon Airport
Conn Murray	Chief Executive Limerick City and County Co.
Barry O'Sullivan	President MW American Chamber
Catherine Duffy	President Limerick Chamber
Don Barry	President UL
John Herlihy	VP Google
Paul Rellis	VP Microsoft
Tim O'Connor	Chairman of Marketing Company
Josephine Fehily	Former Chair of Revenue Commissioners

Index

- Renovation
- Redevelopment
- Georgian Quarter
- Limerick Visitor Destination
- Urban Open Space
- City Square
- Transport Interchange



Train Station Complex

Co-Working/ Post Grad

Energy Valley HQ/Smartport

Advance Office

High End Retail/p Realm

Financial & Edu Campus

Medical Village

Hanging Gardens



- Hanging Gardens Office Block (100,000 sq.ft) purchased
- Design team to be appointed and to commence work on the site Q 4 2015

Opera Site



- 300,000 square feet/2 hectare site now at expressions of interest stage. An assessment of the submitted expressions of interest is due to take place in the coming weeks.
- A JC partner will be secured for the Opera Site in 2016

Cleeves



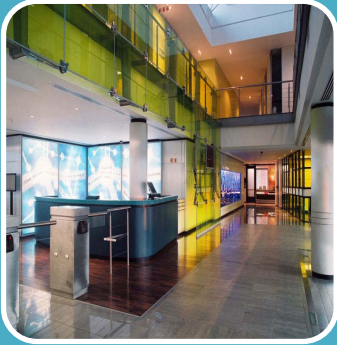
- Cleeves Riverside Park (8 acre site) purchased by LCCC in Q2 2015
- Masterplan to begin in 2015

Mungret College



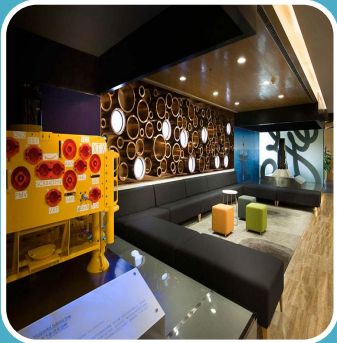
- Education and Public Park Campus in development
- Currently in the process of securing funding and preparing tender documents
- Mungret Master plan to be prepared

Innovate Limerick



- Limerick Innovation Hub has planning approved (35,000 sq.ft)
- Construction to begin Q2 2015

Kantoher Food Hall



- Sale completing for part of building to sitting tenant
- Full sale by y/3 2015

Parkway Valley /Horizon Mall



- An Bord Pleanála granted permission in April 2015 for the €100m Horizon Mall to go ahead.
- Potential for 1,500 retail jobs and 500 construction jobs to be created.

Colbert Station



- The phase I of the redevelopment to be completed in 2015
- Part 8 funding to improve the public realm in the general area
- Phase II Office Space

Limerick Footbridge



- Failte Ireland Study basis
- Feasibility study has been completed
- A design team will be secured in 2015



Anderson Rathkeale

- Purchased by LCCC Q3 2014
- 80% sold/let within 9 months
- Design Pro to be in full operation with 45 staff in Anderson by June 2015
- Attract other enterprises to Anderson in 2015



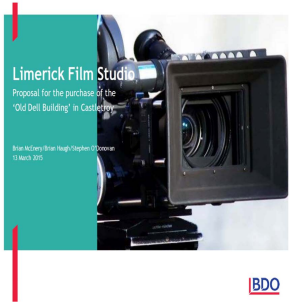
UL Transportation Link

Study finalised - preferred option identified

€2m allocated in Council budget for each of the next 3 years

Next step is to move to design phase

Ardmore Film Studios Limerick



- Partnership Agreement between LCCC and Ardmore Film Studios
- Business Plan complete and with parties for sign-off
- LCCC purchased the old Dell factory in Castletroy, (350,000sq ft) in Q2 2015.
- Potential for 750 new jobs and commercial spin-off of €70m for the local economy.

National Advanced Manufacturing Centre



- Innovate Limerick (LCCC SPV) led 'Limerick' bid to IDA/EI
- Limerick is site ready to house the NAMC backed by strong multinational and indigenous enterprise support

Limerick for IT Initiative



- Creation of 220+ jobs to date
- Potential to create 1,000 IT jobs in the next 3 years

Limerick Medical College



- LIT and Barrington's Private Hospital partnership
- New B(Sc) Medtech degree programme in LIT in 2015

Retail, Incentive and Investment Schemes



- Potential for 30 new retailers and 100 jobs created in 2015
- Business Incentive Scheme
- Rate revaluations/ reductions

Arthurs Quay Retail Development

Limerick 2030 Outcomes

30

overseas tourist
Media/PR visits Hosted
= **118** Journalists
= **€15m** AVEs

7 major FDI

announcements
900+ high tech jobs
750+ construction jobs
€420m investment

2,000 jobs

created to date with
220+ jobs created
through the Limerick for IT
Initiative

30

New retailers
invested in City
Centre

100 new retail jobs
created

€1million invested
Retail & Business
Incentive Scheme (2012-
date)

The **Living
Cities
Initiative** (tax
incentive) officially
launched in Limerick
in May 2015

**Ardmore Film
Studios**

Development
Partnership Secured

100,000 sq.ft
of enterprise space
(former Anderson Factory)
purchased

All Key **Strategic
Sites** advanced
& **Mungret
College/Lands**
purchase
completed

LCCC Council purchased
Limerick's **Cleeves
site** (8 acres)

61 Jobs created by
LEO

68 Training & Development
events organised by LEO with
856 participants

1130

Planning Applications



Open Discussion